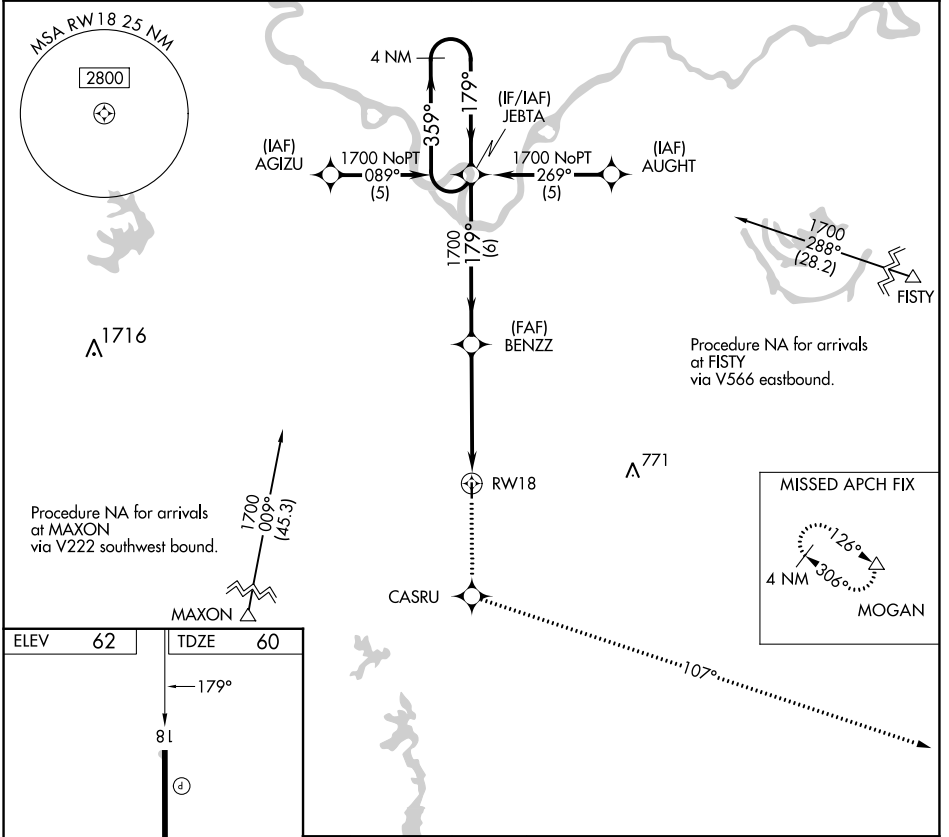


APP CRS	Rwy Idg	<b>3005</b>
<b>179°</b>	TDZE	<b>60</b>
	Apt Elev	<b>62</b>

# RNAV (GPS) RWY 18

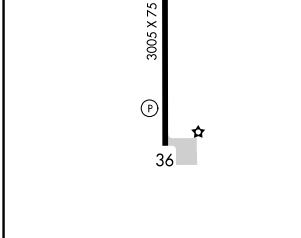
BUNKIE MUNI (2R6)

RNP APCH.		MISSED APPROACH: Climb to 2000 direct CASRU and via 107° track to MOGAN and hold.
	Use Alexandria Intl altimeter setting; when not received, use Esler Rgnl altimeter setting.	
POLK APP CON <b>125.4 302.2</b>		CTAF <b>122.9</b>



SC-4, 22 FEB 2024 to 21 MAR 2024

SC-4, 22 FEB 2024 to 21 MAR 2024



2000	CASRU	107° tr	MOGAN	VGSIs and descent angles not coincident (VGSi Angle 3.00/TCH 25).	
				BENZZ	JEBTA
				4 NM Holding Pattern	
	RW18			1700	1700
		5 NM	6 NM		
CATEGORY	A	B	C	D	
LNAV MDA	600-1 540 (600-1)			NA	

REIL Rwy 18 and 36

MIRL Rwy 18-36

APP CRS	Rwy Idg	<b>3005</b>
<b>359°</b>	TDZE	<b>60</b>
	Apt Elev	<b>62</b>

# RNAV (GPS) RWY 36

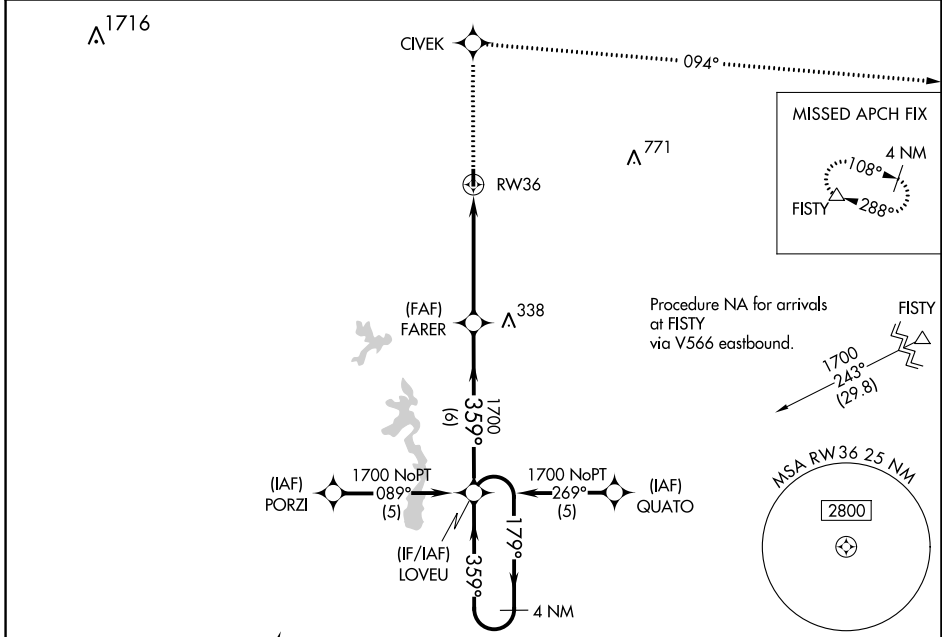
BUNKIE MUNI (2R6)

**NA** DME/DME RNP-0.3 NA. Visibility reduction by helicopters NA. Use Alexandria Intl altimeter setting; when not received, use Esler Rgnl altimeter setting.

**MISSED APPROACH:** Climb to 4000 direct CIVEK and right turn via 094° track to FISTY and hold.

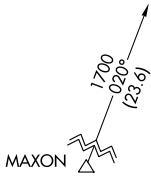
**POLK APP CON**  
**125.4 302.2**

**CTAF**  
**122.9**



SC-4, 22 FEB 2024 to 21 MAR 2024

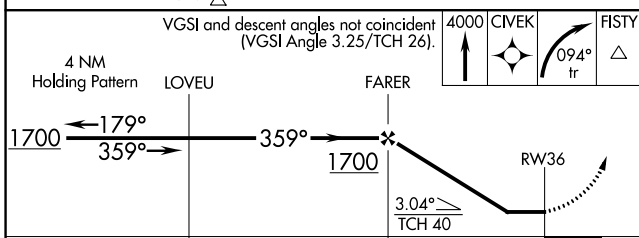
SC-4, 22 FEB 2024 to 21 MAR 2024



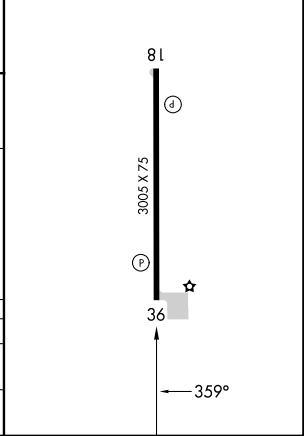
Procedure NA for arrivals at MAXON via V222 southwest bound.

ELEV	<b>62</b>	TDZE	<b>60</b>
------	-----------	------	-----------

REIL Rwy 18 and 36 **1**  
MIRL Rwy 18-36 **1**



CATEGORY	A	B	C	D
LNVA MDA	580-1 520 (600-1)		NA	
CIRCLING	580-1 518 (600-1)	660-1 598 (600-1)	NA	



<b>VORTAC AEX</b> <b>116.1</b> Chan <b>108</b>	<b>APP CRS</b> <b>140°</b>	Rwy Idg TDZE Apt Elev	<b>N/A</b> <b>N/A</b> <b>62</b>
--	-------------------------------	-----------------------------	---------------------------------------

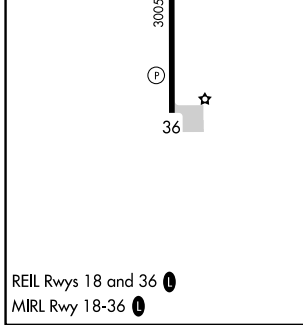
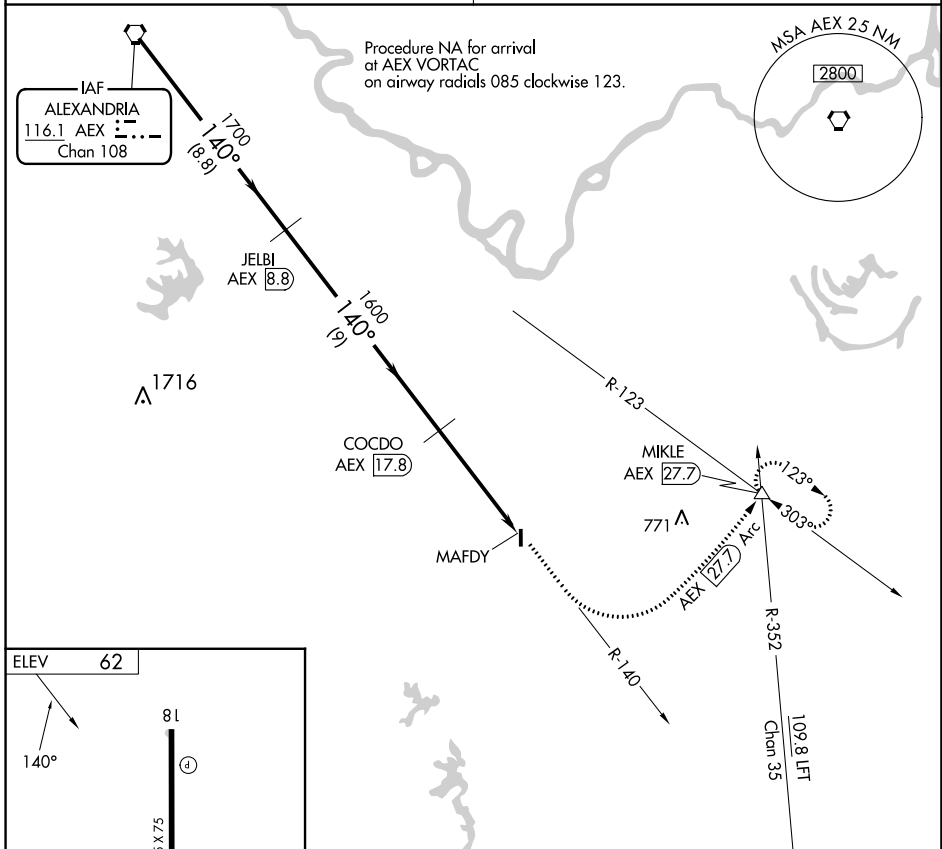
**VOR/DME-A**  
BUNKIE MUNI (2R6)

**NA** Use Alexandria Intl altimeter setting; when not received, use Esler Rgnl altimeter setting.

**MISSED APPROACH:** Climb to 3000 via AEX R-140 and AEX 27.7 DME Arc to MIKLE Int/AEX 27.7 DME and hold.

**POLK APP CON**  
**125.4 302.2**

**CTAF**  
**122.9**



	AEX VORTAC	JELBI AEX (8.8)	COCDO AEX (17.8)	MAFDY AEX (22.4)	MIKLE AEX (27.7) Arc	3000 AEX R-140
Procedure Turn	NA					
CATEGORY	A	B	C	D		
CIRCLING	880-1 818 (900-1)	880-1¼ 818 (900-1¼)	NA			

SC-4, 22 FEB 2024 to 21 MAR 2024

SC-4, 22 FEB 2024 to 21 MAR 2024