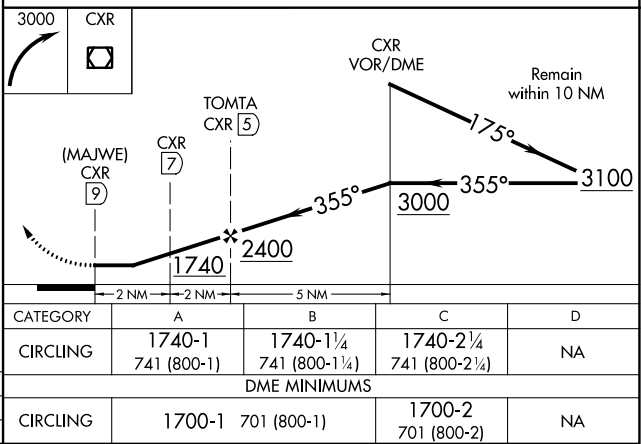
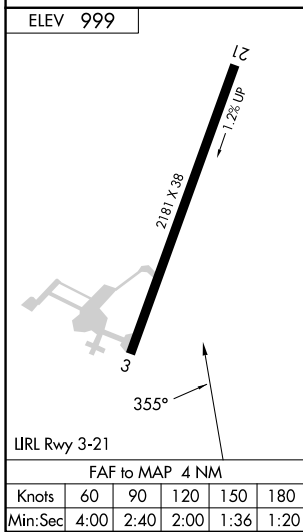
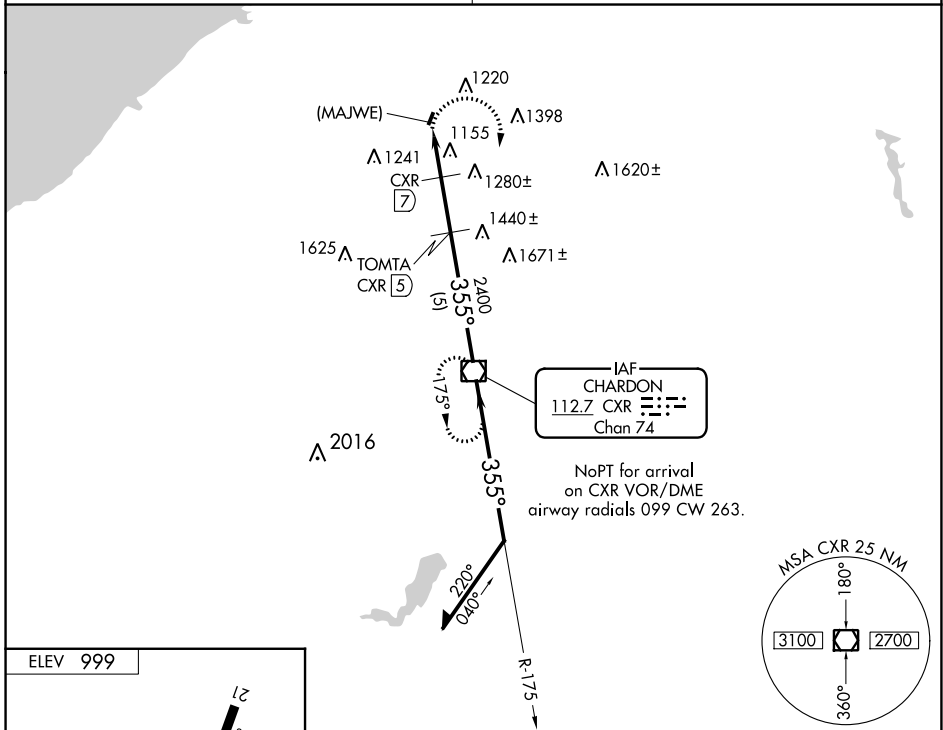


VOR/DME CXR 112.7 Chan 74	APP CRS 355°	Rwy Idg TDZE Apt Elev 999	N/A N/A 999
---	------------------------	---	--

VOR or GPS-A

CONCORD AIRPARK (2G1)

DME required for VOR approach.	MISSED APPROACH: Climbing right turn to 3000 direct CXR VOR/DME and hold.
<p>Procedure not authorized at night. Use Cleveland-Hopkins altimeter setting.</p>	
CLEVELAND APP CON 125.35 346.325	UNICOM 122.8 (CTAF)



EC-2, 22 FEB 2024 to 21 MAR 2024

EC-2, 22 FEB 2024 to 21 MAR 2024