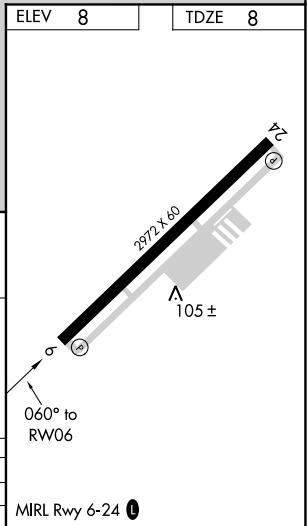
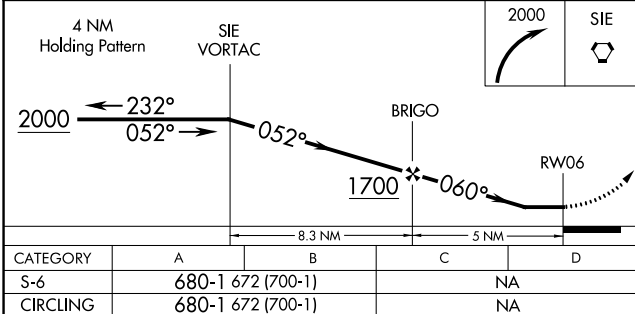
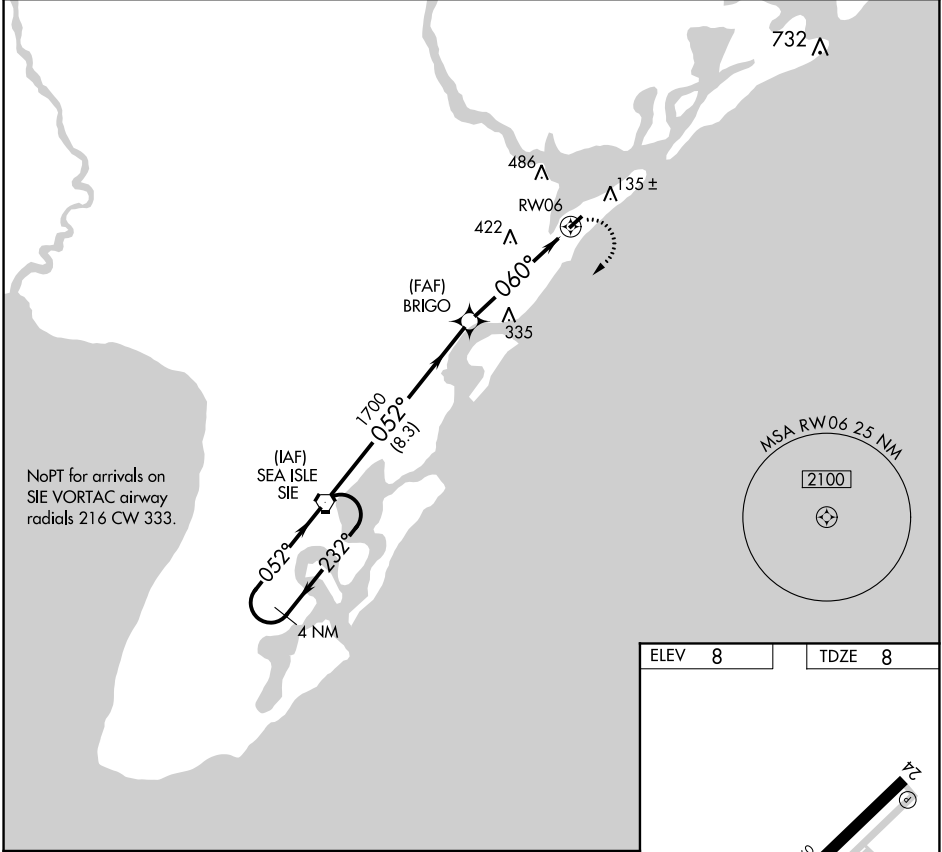


APP CRS 060°	Rwy Idg TDZE Apt Elev	2972 8 8
------------------------	-----------------------------	-------------------------------------

GPS RWY 6
OCEAN CITY MUNI (26N)

▲ NA When local altimeter setting not received, use Atlantic City altimeter setting.	MISSED APPROACH: Climbing right turn to 2000 direct SIE VORTAC and hold.
---	--

AWOS-AV 119.775	ATLANTIC CITY APP CON 124.6 327.125	CLNC DEL 133.6	UNICOM 122.7 (CTAF) 0
---------------------------	---	--------------------------	---------------------------------



CATEGORY	A	B	C	D
S-6	680-1 672 (700-1)		NA	
CIRCLING	680-1 672 (700-1)		NA	

NE-2, 17 JUN 2021 to 15 JUL 2021

NE-2, 17 JUN 2021 to 15 JUL 2021