

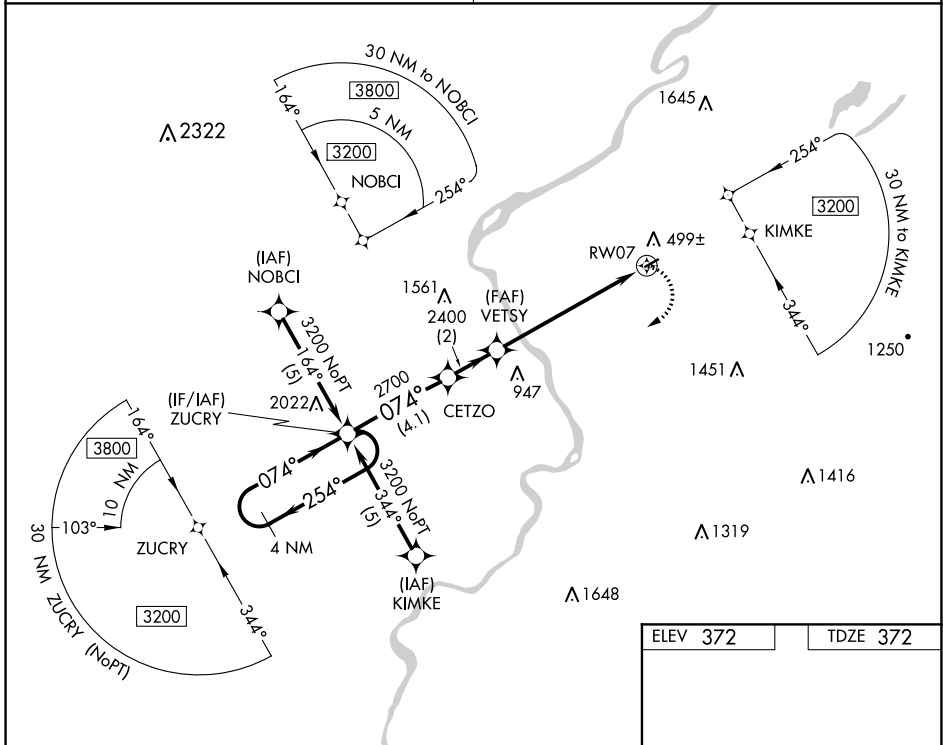
APP CRS 074°	Rwy Idg 2794
	TDZE 372
	Apt Elev 372

RNAV (GPS) RWY 7

BLAIRSTOWN (1N7)

RNP APCH.	MISSED APPROACH: Climbing right turn to 3200 direct ZUCRY and hold.
▼ When local altimeter setting not received, use Lehigh Valley altimeter setting. Procedure NA at night. Rwy 7 helicopter visibility reduction below 1 SM NA.	

NEW YORK APP CON 127.6 379.9	UNICOM 123.0 (CTAF) 0
--	---------------------------------



NE-2, 22 FEB 2024 to 21 MAR 2024

NE-2, 22 FEB 2024 to 21 MAR 2024

4 NM Holding Pattern		Visual Segment - Obstacles.		3200	ZUCRY
ZUCRY 3200 ← 254° / 074° →		CETZO 2700		VETSYS 2400	
		RWY 07 2700			
		4.1 NM 2 NM 6.2 NM			
CATEGORY	A	B	C	D	
LNAV MDA	1140-1 768 (800-1)	1140-1¼ 768 (800-1¼)		NA	
LEHIGH VALLEY ALTIMETER SETTING MINIMUMS					
LNAV MDA	1420-1¼ 1048 (1100-1¼)	1420-1½ 1048 (1100-1½)		NA	

