

WAAS CH 82033 W22A	APP CRS 223°	Rwy Idg TDZE Apt Elev	3895 1003 1008
--	------------------------	-----------------------------	---

RNAV (GPS) RWY 22

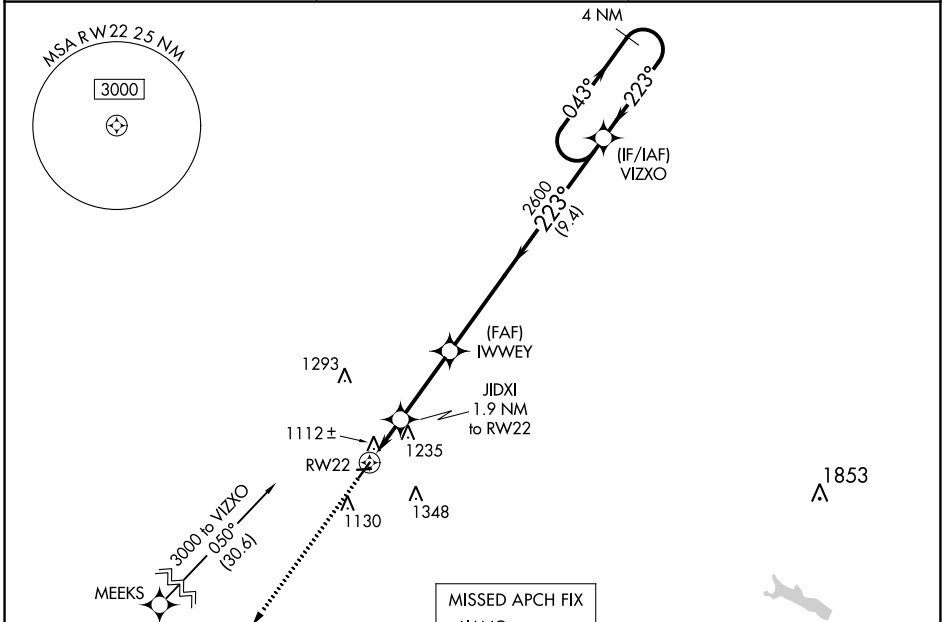
PORT BUCYRUS-CRAWFORD COUNTY (17G)

RNP APCH.

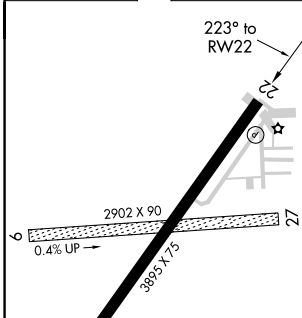
NA Circling NA to Rwy 9 and 27. Rwy 22 helicopter visibility reduction below 1 SM NA. Straight-in and Circling Rwy 22 NA at night. When local altimeter setting not received, use Mansfield altimeter setting; increase all MDA 100 feet and visibility Cat C 3/8 SM.

MISSED APPROACH: Climb to 3000 direct LIANG and hold.

AWOS-3 126.625	CLEVELAND APP CON * 124.2 360.65	UNICOM 122.8 (CTAF)
--------------------------	--	-------------------------------

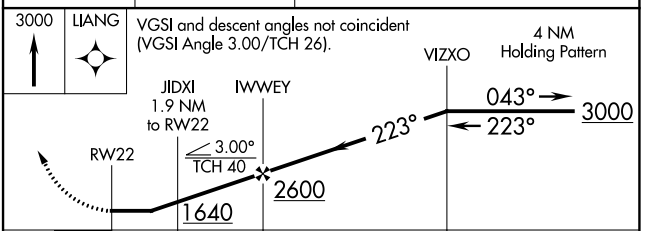
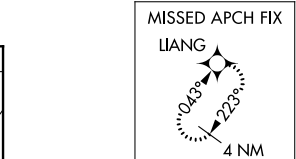


ELEV 1008	TDZE 1003
-----------	-----------



REIL Rwy 4 and 22 **1**

MIRL Rwy 4-22 **1**



CATEGORY	A	B	C	D
LP MDA	1380-1 377 (400-1)			NA
LNAV MDA	1500-1	497 (500-1)	1500-1 ^{3/8} 497 (500-1 ^{3/8})	NA
C CIRCLING	1500-1 492 (500-1)	1540-1 532 (600-1)	1700-2 692 (700-2)	NA

EC-2, 19 MAY 2022 to 16 JUN 2022

EC-2, 19 MAY 2022 to 16 JUN 2022

APP CRS	Rwy Idg	3619
043°	TDZE	1003
	Apt Elev	1008

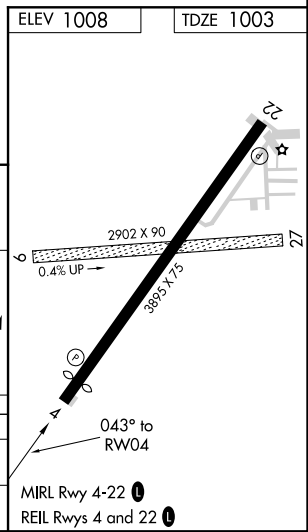
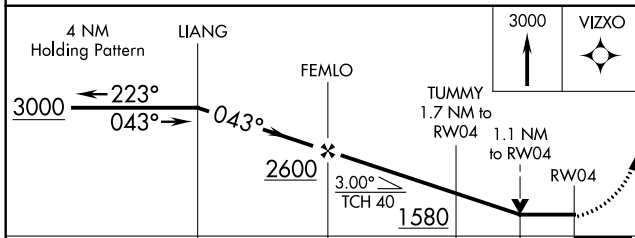
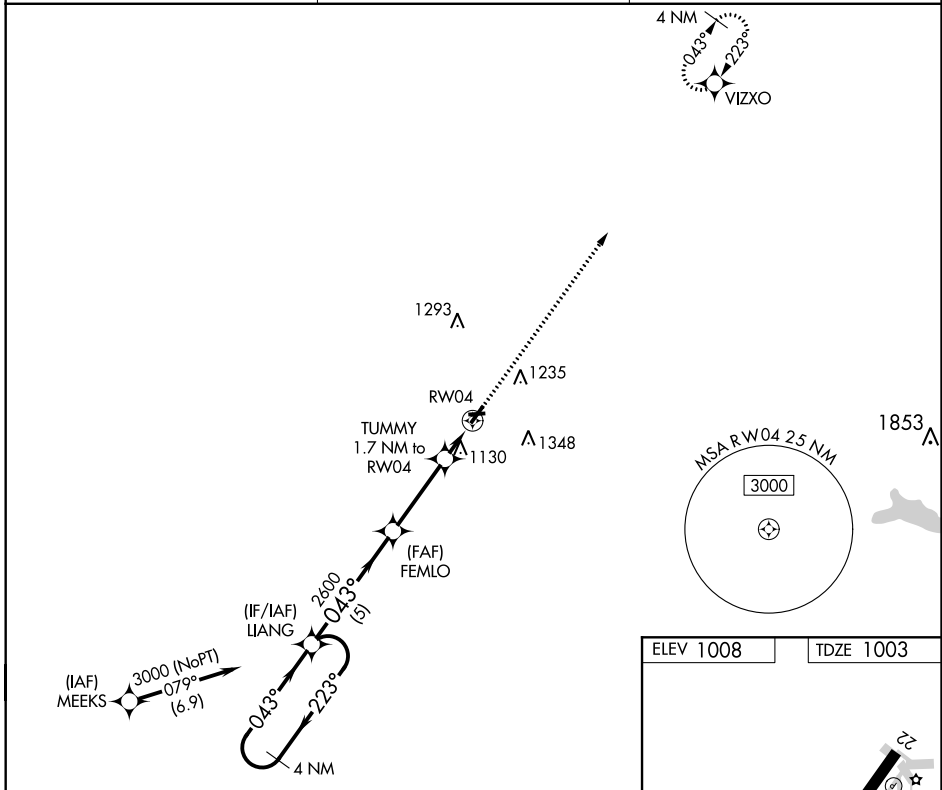
RNAV (GPS) RWY 4

PORT BUCYRUS-CRAWFORD COUNTY (17G)

RNP APCH. MISSED APPROACH: Climb to 3000 direct VIZXO and hold.

NA Circling NA to Rwys 9 and 27. Circling Rwy 22 NA at night. Rwy 4 helicopter visibility reduction below 3/4 SM NA. VDP NA with Mansfield altimeter setting. When local altimeter setting not received, use Mansfield altimeter setting: increase all MDA 100 feet and visibility Cat C 3/8 SM.

AWOS-3 126.625	CLEVELAND APP CON ★ 124.2 360.65	UNICOM 122.8 (CTAF) 0
--------------------------	--	---------------------------------



CATEGORY	A	B	C	D
LNVA MDA	1380-1	377 (400-1)		NA
C CIRCLING	1500-1 492 (500-1)	1540-1 532 (600-1)	1700-2 692 (700-2)	NA

RNAV (GPS) RWY 4

EC-2, 19 MAY 2022 to 16 JUN 2022

EC-2, 19 MAY 2022 to 16 JUN 2022

VOR BUD 109.8	APP CRS 208°	Rwy Idg TDZE Apt Elev	3895 1003 1008
-------------------------	------------------------	-----------------------------	---

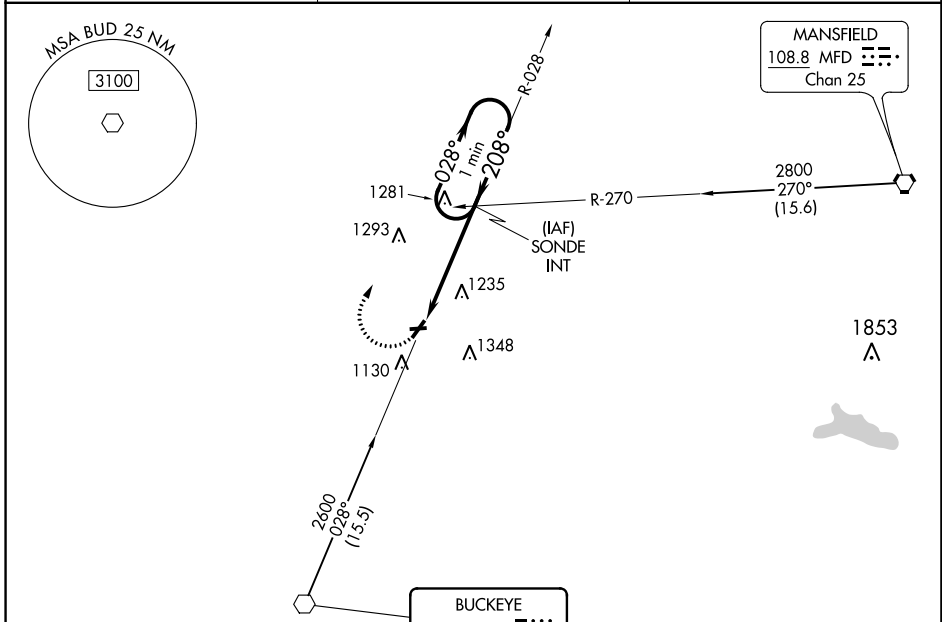
VOR RWY 22

PORT BUCYRUS-CRAWFORD COUNTY (17G)

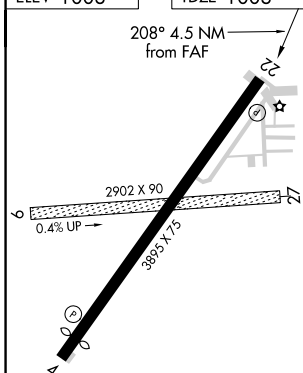
NA Circling NA to Rwy 9 and 27. Rwy 22 helicopter visibility reduction below 1 SM NA. Straight-in and Circling Rwy 22 NA at night. When local altimeter setting not received, use Mansfield altimeter setting: increase all MDA 100 feet and visibility Cats B and C ½ SM.

MISSED APPROACH: Climbing right turn to 2600 on heading 090° and on BUD VOR R-028 to SONDE INT and hold.

AWOS-3 126.625	CLEVELAND APP CON ★ 124.2 360.65	UNICOM 122.8 (CTAF) 0
--------------------------	--	---------------------------------



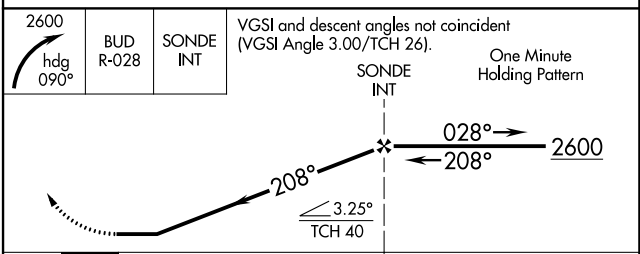
ELEV 1008	TDZE 1003
-----------	-----------



MIRL Rwy 4-22 **0**
REIL Rwys 4 and 22 **0**

FAF to MAP 4.5 NM

Knots	60	90	120	150	180
Min:Sec	4:30	3:00	2:15	1:48	1:30



CATEGORY	A	B	C	D
S-22	1700-1	697 (700-1)	1700-2 697 (700-2)	NA
0 CIRCLING	1700-1	692 (700-1)	1700-2 692 (700-2)	NA

VOR RWY 22

EC-2, 19 MAY 2022 to 16 JUN 2022

EC-2, 19 MAY 2022 to 16 JUN 2022