

APP CRS 175°	Rwy Idg TDZE Apt Elev	N/A N/A 2439
------------------------	-----------------------------	-----------------------------------------

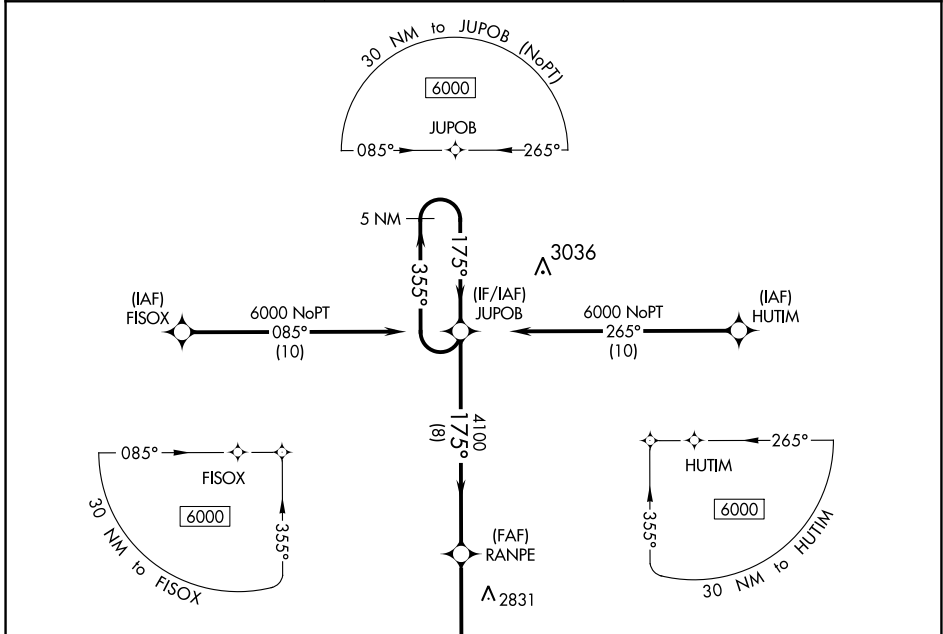
RNAV (GPS)-A

TREGO WAKEENEY (ØH1)

▽ DME/DME RNP-0.3 NA. Procedure NA at night. Use Hill City altimeter setting; when not received, use Hays altimeter setting and increase all MDA 40 feet and Cat C visibility ¼ mile. Helicopter visibility reduction below 1 SM NA.

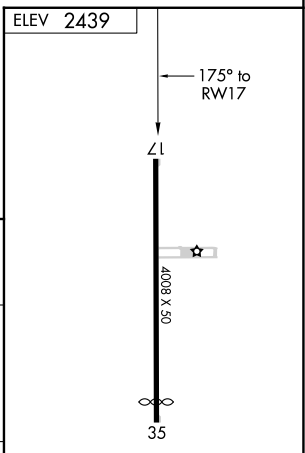
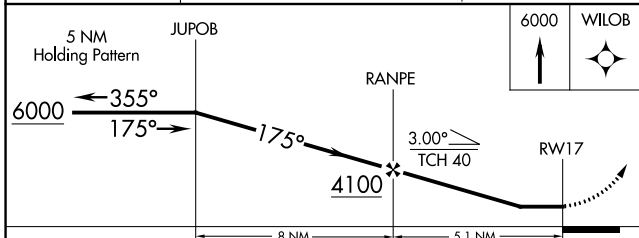
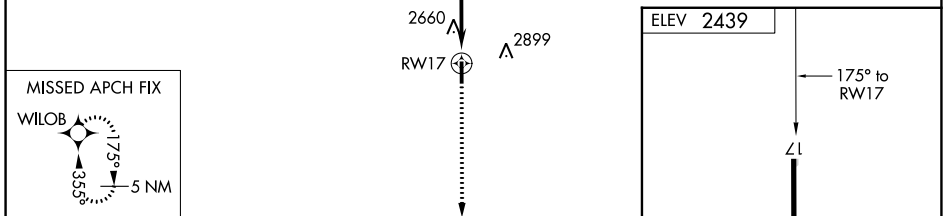
MISSED APPROACH: Climb to 6000 direct WILOB and hold, continue climb-in-hold to 6000.

HLC ASOS 118.425	DENVER CENTER 132.7 226.675	CTAF 122.9
----------------------------	---------------------------------------	----------------------



NC-2, 22 FEB 2024 to 21 MAR 2024

NC-2, 22 FEB 2024 to 21 MAR 2024



CATEGORY	A	B	C	D
C CIRCLING	3120-1 681 (700-1)	3300-1¼ 861 (900-1¼)	3300-2½ 861 (900-2½)	NA

IIRL Rwy 17-35

APP CRS	Rwy Idg	N/A
355°	TDZE	N/A
	Apt Elev	2439

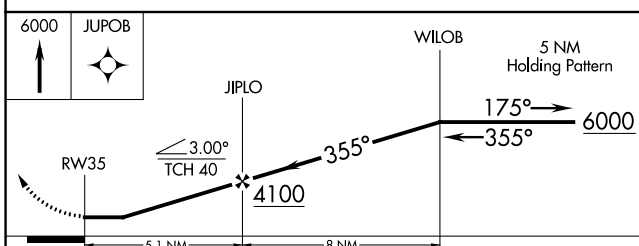
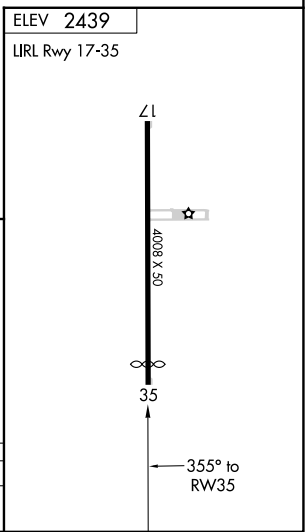
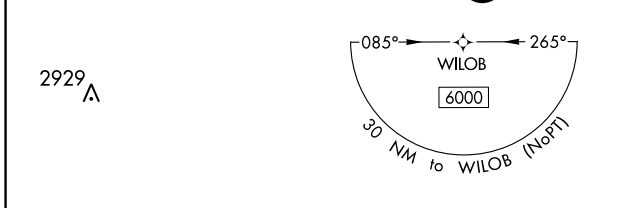
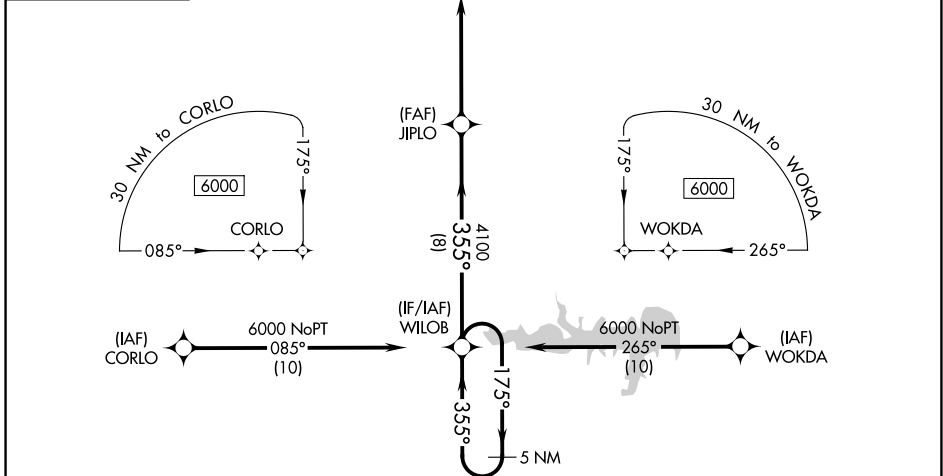
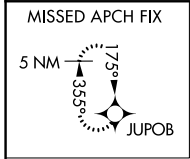
RNAV (GPS)-B

TREGO WAKEENEY (ØH1)

NA DME/DME RNP-0.3 NA. Procedure NA at night. Use Hill City altimeter setting; when not received, use Hays altimeter setting and increase all MDA 40 feet and Cat C visibility ½ mile. Helicopter visibility reduction below 1 SM NA.

MISSED APPROACH: Climb to 6000 direct JUPOB and hold, continue climb-in-hold to 6000.

HLC ASOS 118.425	DENVER CENTER 132.7 226.675	CTAF 122.9
----------------------------	---------------------------------------	----------------------



CATEGORY	A	B	C	D
C CIRCLING	3120-1 681 (700-1)	3300-1¼ 861 (900-1¼)	3300-2½ 861 (900-2½)	NA

NC-2, 22 FEB 2024 to 21 MAR 2024

NC-2, 22 FEB 2024 to 21 MAR 2024