

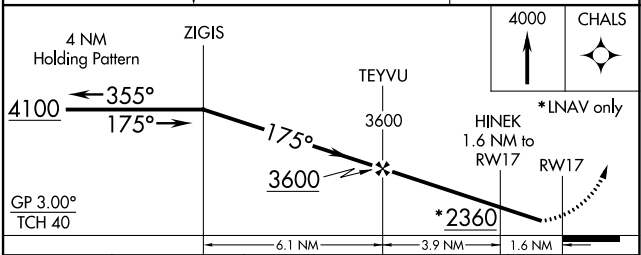
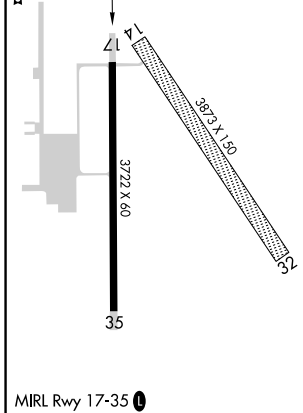
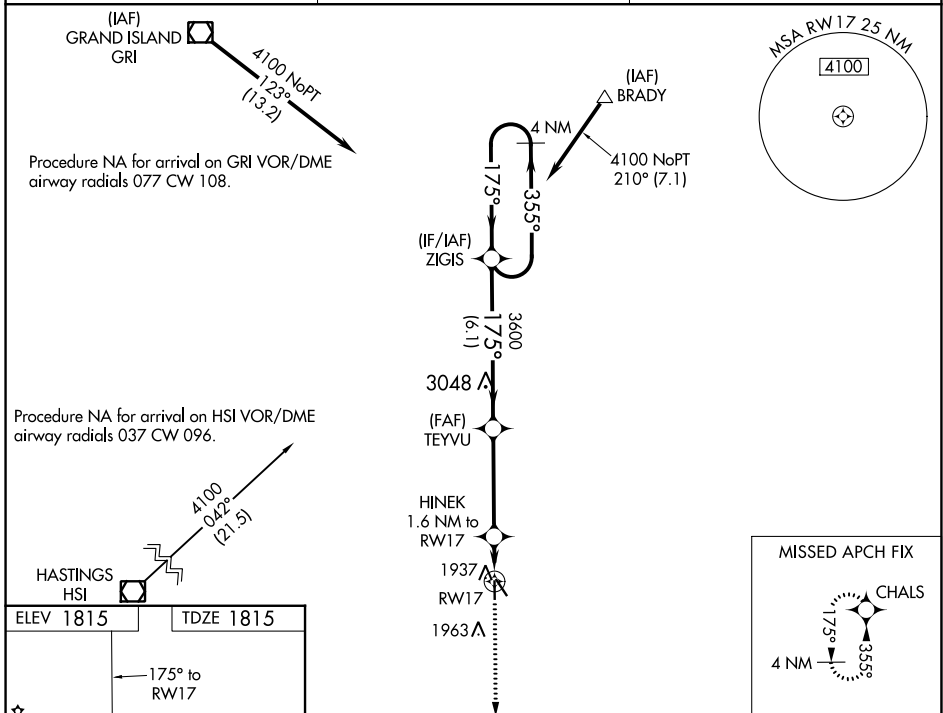
WAAS CH <b>99631</b> <b>W17A</b>	APP CRS <b>175°</b>	Rwy Idg TDZE Apt Elev	<b>3722</b> <b>1815</b> <b>1815</b>
--	------------------------	-----------------------------	---

# RNAV (GPS) RWY 17

HARVARD STATE (Ø8K)

RNP APCH.	MISSED APPROACH: Climb to 4000 direct CHALS and hold.
<p>Baro-VNAV NA. Use Aurora Muni altimeter setting; when not received, use Central Nebraska Rgnl altimeter setting; increase LPV DA to 2120 feet, increase LNAV/VNAV DA to 2135 feet and visibility all Cats ½ SM, increase all MDAs 20 feet. Rwy 17 helicopter visibility reduction below ¾ SM NA.</p>	

AUH AWOS-3 <b>121.225</b>	MINNEAPOLIS CENTER <b>119.4 278.8</b>	CTAF <b>122.90</b>
------------------------------	--	-----------------------



CATEGORY	A	B	C	D
LPV DA	2102-1	287 (300-1)	NA	
LNAV/VNAV DA	2117-1	302 (400-1)	NA	
LNAV MDA	2280-1 465 (500-1)	2300-1 485 (500-1)	NA	

NC-2, 22 FEB 2024 to 21 MAR 2024

NC-2, 22 FEB 2024 to 21 MAR 2024